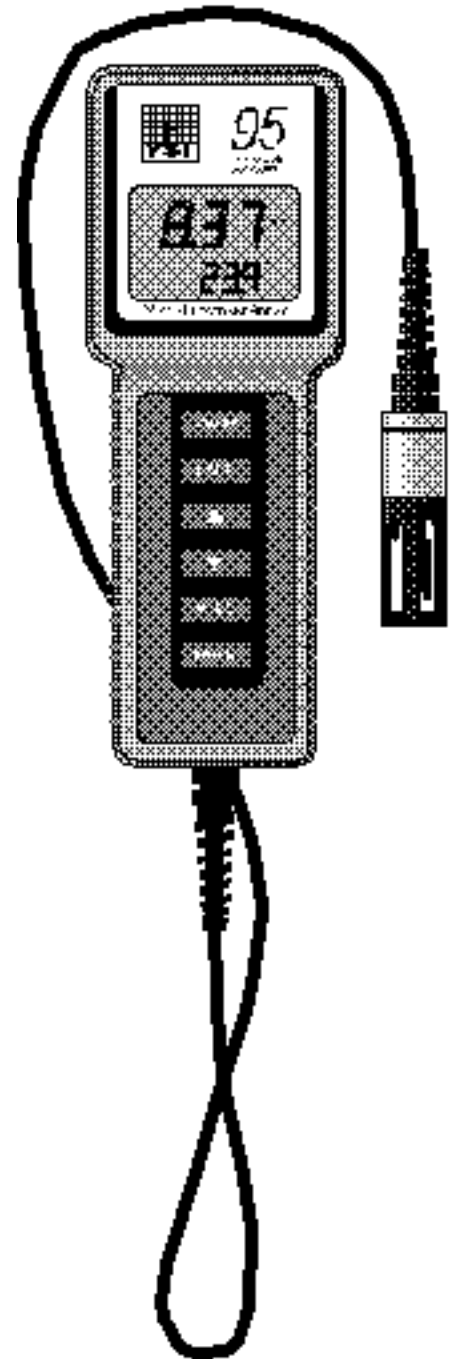


YSI incorporated



YSI 95
Handheld
Dissolved Oxygen
And
Temperature System

Service
Manual

CONTENTS

SECTION 1	INTRODUCTION	1
SECTION 2	PREPARING THE METER	3
2.1	UNPACKING.....	3
2.2	WARRANTY CARD.....	3
2.3	BATTERIES.....	3
2.4	CALIBRATION/STORAGE CHAMBER.....	4
2.5	HAND STRAP.....	4
2.6	METER CASE.....	4
SECTION 3	PREPARING THE PROBE.....	6
3.1	CHOOSING THE CORRECT MEMBRANE CAP.....	6
3.2	MEMBRANE CAP INSTALLATION.....	6
SECTION 4	OPERATION.....	8
4.1	TURNING THE INSTRUMENT ON.....	9
4.2	CALIBRATION.....	9
4.3	MAKING MEASUREMENTS.....	10
4.4	STIRRING.....	11
4.5	SAVING DATA	11
4.6	RECALLING STORED DATA	11
4.7	ERASING STORED DATA	12
4.8	TOGGLING BETWEEN %-AIR SATURATION AND MG/L.....	13
4.9	DISSOLVED OXYGEN FILTER	13
4.10	DISPLAY BACKLIGHT.....	13
SECTION 5	PRINCIPLES OF OPERATION.....	14
5.1	MEA CLARK OXYGEN SENSOR.....	14
5.2	DO READINGS FROM THE CATHODE REDUCTION.....	15
5.3	FORMATION OF AgCl AT THE ANODE.....	15
5.4	FUNCTION OF THE ELECTROLYTE.....	15
SECTION 6	MAINTENANCE OF THE MEA SENSOR.....	16
6.1	ANODE SERVICE.....	16
6.2	CATHODE SERVICE.....	16
6.3	DISSOLVED OXYGEN PROBE PRECAUTIONS	17
6.4	PROBE STORAGE.....	17
SECTION 7	DISCUSSION OF MEASUREMENT ERRORS	19
SECTION 8	TROUBLESHOOTING.....	21
SECTION 9	WARRANTY AND REPAIR.....	24
SECTION 10	SERVICE.....	29
10.1	SYSTEM FUNCTIONALITY TEST	29
10.2	TEST PROCEDURES.....	29
10.3	ASSEMBLY DRAWING.....	33
10.4	DISASSEMBLY PROCEDURES	34

10.5	CIRCUIT DIAGRAMS	35
10.6	BOARD LAYOUTS.....	38
10.7	PC BOARD PARTS LIST	39
APPENDIX A	GENERAL SPECIFICATIONS	41
APPENDIX B	REQUIRED NOTICE.....	43
APPENDIX C	ACCESSORIES AND REPLACEMENT PARTS.....	44
APPENDIX D	UNIT CONVERSION	45
APPENDIX E	OXYGEN SOLUBILITY TABLE.....	46
APPENDIX F	CALIBRATION VALUES TABLE.....	48

SECTION 1 INTRODUCTION

The YSI 95 Handheld Dissolved Oxygen and Temperature System is a rugged, micro-processor based, digital meter with an attached YSI microelectrode array (MEA) dissolved oxygen probe. The MEA sensor eliminates the need for stirring in most environmental applications allowing measurement of DO in the field without an external stirring device. It also reduces measurement errors caused by insufficient or inconsistent stirring.

The YSI 95 has the following features:

- Microprocessor control
- Minimal stirring dependence
- Low maintenance MEA DO probe
- Push-button calibration
- Cap membranes for easy membrane replacement
- Simultaneous display of temperature and DO in % air saturation or mg/L
- Automatic salinity compensation with manual entering of salinity value
- Automatic temperature compensation
- Data storage for 50 sets of readings with on screen recall
- Waterproof case (IP65)

The YSI 95 has a non-detachable, combination sensor available with cable lengths of 10, 25, 50 or 100 feet. The YSI 95D has a detachable cable. The probe utilizes easy to install cap membranes and the probe body has been manufactured with stainless steel to add rugged durability and sinking weight. The silver anode of the MEA DO sensor requires no servicing for up to 10,000 hours (four years) of operation under normal operating conditions (no sulfite contamination).

The YSI 95's micro-processor allows the system to be easily calibrated with the press of a few buttons. Additionally, the micro-processor performs a self-diagnostic routine each time the instrument is turned on. The self-diagnostic routine provides useful information about the function of the instrument and probe. For a list of these diagnostic codes, see Section 8, **Troubleshooting**.

A probe calibration/storage chamber is built into the instrument case. A small moist sponge in the chamber provides a water-saturated air environment that is ideal for air calibration of the dissolved oxygen probe. This chamber also provides a convenient place to store the probe when the system is not in use. The YSI 95 case is rated to IP65 allowing operation in the rain without damage to the instrument.

Six AA-sized alkaline batteries power the YSI 95. A new set of alkaline batteries will provide approximately 150 hours of continuous operation. When batteries need to be replaced, the LCD will display a "LO BAT" message.

SERVICE PHILOSOPHY

The YSI 95 is sold as a complete dissolved oxygen and temperature measuring system, including an attached probe. Most service issues that occur in dissolved oxygen systems are caused by improper maintenance of the probe. For this reason, troubleshooting efforts should be initially directed at determining the condition and functionality of the probe and cable.

In the event that a problem is isolated to the meter itself, YSI recommends replacement of the entire defective sub-assembly rather than the individual components. To lessen down time, YSI maintains an adequate stock of replacement sub-assemblies.

The recommended method of determining a sub-assemblies condition is by substitution. For example; to test for a defective probe/cable assembly, substitute a known good assembly or a decade resistance box in it's place. If, after testing, the PCB meets the established specifications, the probe/cable assembly will have to be serviced or replaced.

SECTION 2 PREPARING THE METER

2.1 UNPACKING

When you unpack your new YSI 95 Handheld Dissolved Oxygen and Temperature System for the first time, compare the packing list with the contents of the shipping box. If there is anything missing or damaged, call the dealer from whom you purchased the YSI 95. If you do not know which authorized dealers sold the system to you, call YSI Customer Service at 800-765-4974 or 937-767-7241, and we'll be happy to help you.

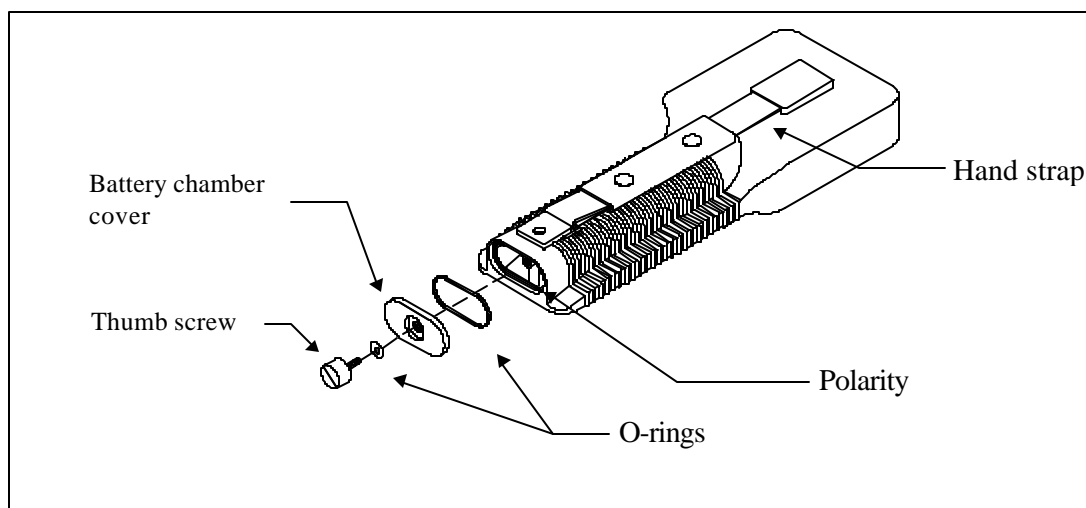
2.2 WARRANTY CARD

Please complete the Warranty Card and return it to YSI. The warranty card allows the entry of your purchase of this instrument in our computer system. Once your purchase is recorded, you will receive prompt, efficient service if any part of your YSI 95 needs repair during the warranty period.

2.3 BATTERIES

There are a few things you must do to prepare your YSI 95 for use. First, locate the six AA-sized alkaline batteries that were included. Use a screwdriver or a small coin to remove the thumbscrew on the bottom of the instrument (see figure below). This thumbscrew holds the battery-chamber cover in place. The battery-chamber cover is marked with the words "OPEN" and "CLOSE."

NOTE: On some models, the battery cover thumbscrew may be unscrewed by hand (a screwdriver may not be required).



There is a small molded insert inside each of the two battery-chamber sleeves. These labels illustrate the correct way to install the batteries into each sleeve of the battery-chamber.

CAUTION: It is very important that the batteries be installed **ONLY** as illustrated. The instrument will not function and may be damaged if the batteries are installed incorrectly.

Turn the instrument on by pressing and releasing the **ON/OFF** button on the front of the instrument. The liquid crystal display (LCD) should come on. Allow a few seconds for the instrument to complete its diagnostic routine. If the instrument does not operate, consult Section 8, **Troubleshooting**.

You may also want to take the instrument into a dark room and with the instrument **ON**, hold down the **LIGHT** button. The instrument back light should illuminate the LCD so that the display can be easily read.

2.4 CALIBRATION/STORAGE CHAMBER

The YSI 95 has a convenient calibration/storage chamber built into the instrument's side. This chamber provides an ideal storage area for the probe during transport and extended non-use. If you look into the chamber, you should notice a small round sponge in the bottom. Carefully put about 10 drops of clean water into the sponge. Turn the instrument over and allow any excess water to drain out of the chamber. The wet sponge creates a 100% water saturated air environment for the probe that is ideal for dissolved oxygen calibration.

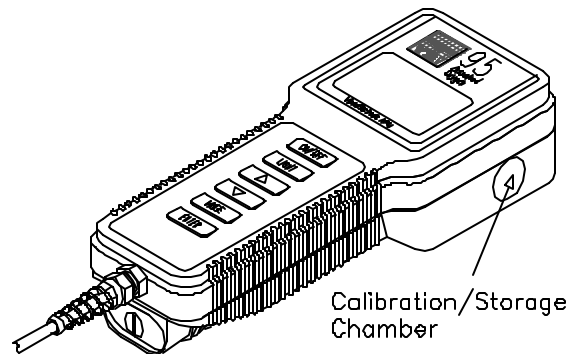


Figure 1

2.5 HAND STRAP

The hand strap (see figure on previous page) is designed to allow comfortable operation of the YSI 95 with minimum effort. If the hand strap is adjusted correctly, it is unlikely that the instrument will be easily dropped or bumped from your hand.

To adjust the hand strap on the back of the meter, unsnap the vinyl cover and pull the two Velcro strips apart. Place your hand between the meter and the strap and adjust the strap length so that your hand is snugly held in place. Press the two Velcro strips back together and snap the vinyl cover back into place.

2.6 METER CASE

The meter case is sealed at the factory and is not intended to be opened, except by authorized service technicians. **Do not attempt to separate the two halves of the meter case as this may**

damage the instrument, break the water-proof seal, and may void the manufacturer's warranty.

SECTION 3 PREPARING THE PROBE

The YSI 95 dissolved oxygen probe is shipped dry with a shipping membrane installed. This protective membrane cap on the probe tip must be removed and replaced with a new membrane cap filled with MEA probe solution before using the probe. Follow the instructions below to install the new membrane cap.

3.1 CHOOSING THE CORRECT MEMBRANE CAP

Two different membrane caps are available for the YSI 95. The YSI 9501 Membrane Cap Kit is supplied with the YSI 95. This kit contains six 0.5 mil (.0005") membrane caps and a bottle of MEA probe solution (KCl).

NOTE: YSI 9501 Membrane Caps offer the fastest response to changes in DO and are recommended by YSI for most applications.

For conditions with low flow or stagnant water, a 1 mil (.001") membrane is available (YSI 9502 Membrane Cap Kit). This membrane requires less stirring than the 9501, but has a much slower response. Use this membrane when minimal stirring (<2"/sec) is available.

3.2 MEMBRANE CAP INSTALLATION

WARNING: Use only YSI MEA probe solution in the membrane cap. Any other solution will damage the MEA sensor.

To install a new membrane cap on your YSI 95 dissolved oxygen probe:

1. Unscrew and remove the probe sensor guard (see Figure 2).
2. Unscrew and remove the old membrane cap.
3. Thoroughly rinse the sensor tip with distilled water.
4. Hold the membrane cap and add 8 to 9 drops of MEA probe solution (about half full).
5. Tap the bottom of the cap with your finger a few times to remove any trapped air bubbles.

CAUTION: Do not touch the membrane surface.

6. Screw the membrane cap onto the probe tightly by hand (to prevent leakage of electrolyte). A small amount of probe solution should overflow.
7. Shake off any excess probe solution and rinse the stainless steel thoroughly with distilled water to prevent corrosion.

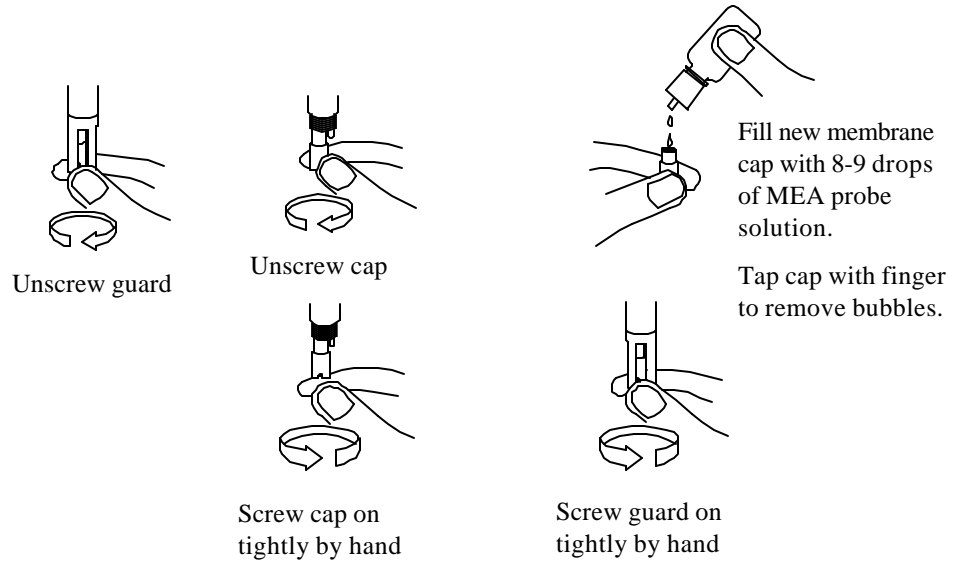


Figure 2

WARNING: Use only YSI MEA probe solution in the membrane cap. Any other solution will damage the MEA sensor.

SECTION 4 OPERATION

The following diagram is an overview of the operation of the YSI 95. See the following sections for details of operation.

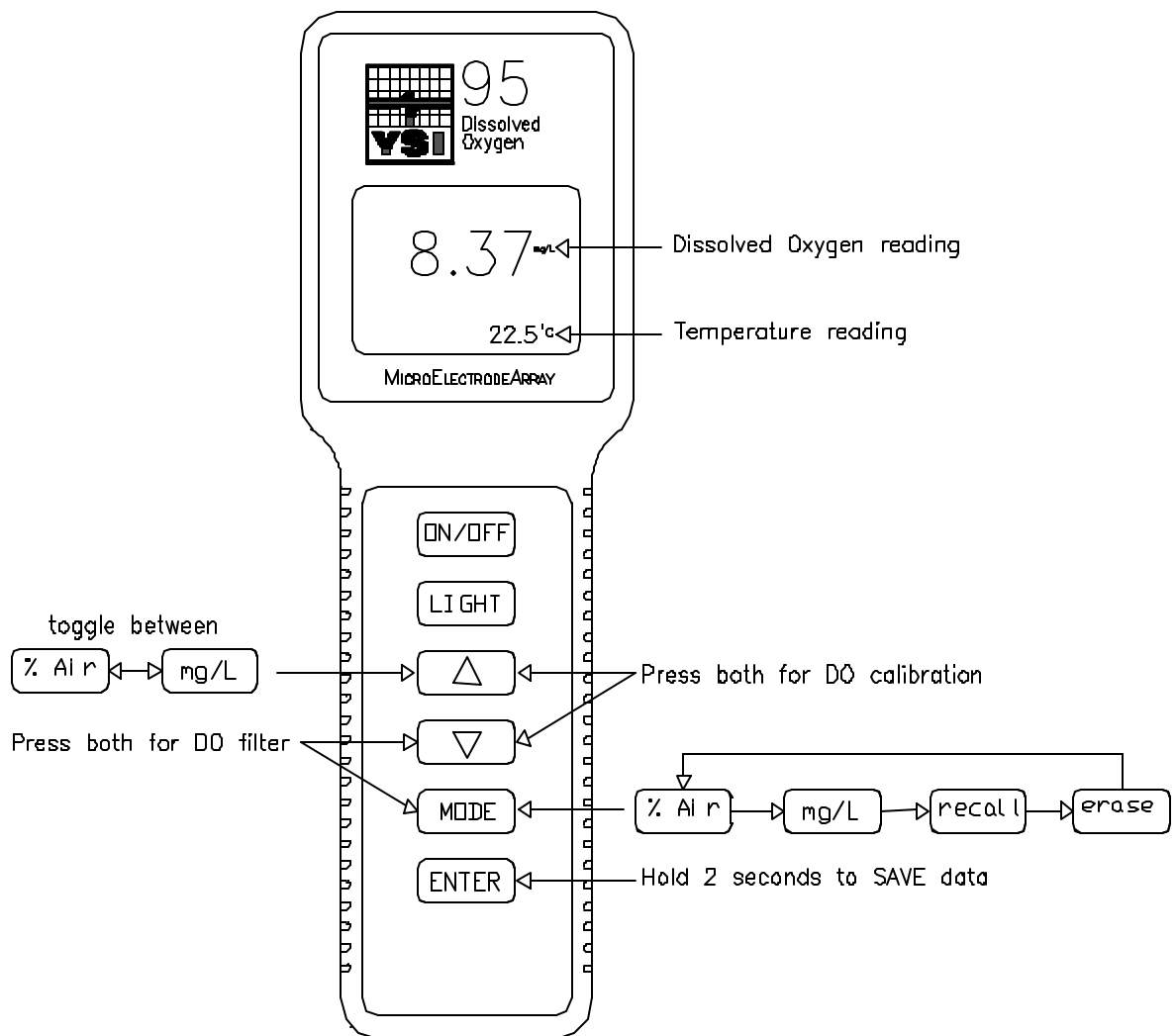


Figure 3

4.1 TURNING THE INSTRUMENT ON

With the batteries installed correctly, press the **ON/OFF** button. The instrument will activate all segments of the display for a few seconds, which will be followed by a self test procedure which will last for several more seconds. During this power on self test sequence, the instrument's microprocessor is verifying that the system is working properly. If the instrument were to detect a problem, a **continuous** error message would be displayed. See the section entitled *Troubleshooting* for a list of error messages.

NOTE: It is normal for an error to be displayed for a second or two when the system is first turned on.

4.2 CALIBRATION

Dissolved oxygen calibration must be done in an environment with a known oxygen content. Since the amount of oxygen in the atmosphere is known, it makes an excellent environment for calibration (at 100% relative humidity). The calibration/storage chamber contains a moist sponge to create a 100% water saturated air environment.

Before calibrating the YSI 95, complete the procedures discussed in the *Preparing the Meter* and *Preparing the Probe* sections of this manual.

To accurately calibrate the YSI 95 you will need to know the following information:

- The approximate altitude of the region in which you are located.
 - The approximate salinity of the samples that you will be measuring. Fresh water has a salinity of approximately zero. Sea water has a salinity of approximately 35 (parts per thousand, ppt). If you are not certain what the salinity of the sample water is, use a YSI 30 Salinity-Conductivity-Temperature system to determine it.
1. Ensure that the sponge inside the instrument's calibration chamber is wet. Insert the probe into the calibration chamber.
 2. Turn the instrument on by pressing the **ON/OFF** button. Wait for the dissolved oxygen and temperature readings to stabilize (usually 15 minutes is required after turning the instrument on). If the instrument was already on, press the **MODE** button until dissolved oxygen is displayed in mg/L or % air saturation. To enter the calibration menu, use two fingers to press and release both the **UP ARROW** and **DOWN ARROW** buttons at the same time (**DOWN ARROW** slightly ahead).

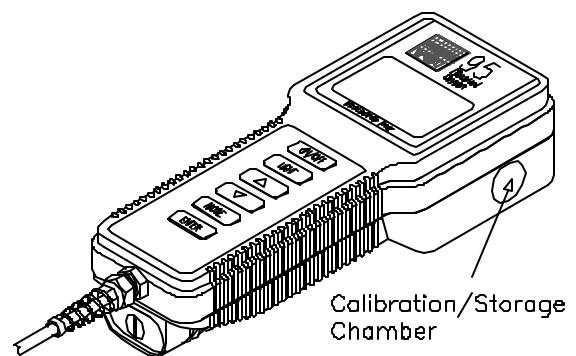


Figure 4

- The LCD will prompt you to enter the local altitude in hundreds of feet. Use the arrow keys to increase or decrease the altitude. When the proper altitude appears on the LCD, press the **ENTER** button once.

EXAMPLE: Entering the number 12 here indicates 1200 feet.

- The LCD will prompt you to enter the salinity of the sample(s) that you will be measuring. You can enter any number from 0 to 80 (ppt). Use the arrow keys to increase or decrease the salinity setting. When the proper salinity appears on the LCD (zero for fresh water), press the **ENTER** button.
- The YSI 95 should now display **CAL** in the lower left of the display, the calibration value should be displayed in the lower right of the display and the current DO reading (before calibration) should be on the main display. Make sure that the DO reading (large display) is stable, then press the **ENTER** button. The display should read SAVE then should return to the Normal Operation Mode.

For best results:

- Each time the YSI 95 is turned off, re-calibrate before taking measurements.
- Calibrate at a temperature within $\pm 10^{\circ}\text{C}$ of the sample temperature.

4.3 MAKING MEASUREMENTS

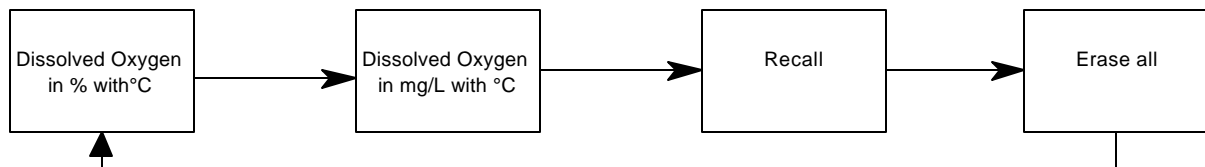
The YSI 95 has four modes:

- **Dissolved Oxygen %** -- A measurement of oxygen in percent of air saturation (partial pressure).
- **Dissolved Oxygen mg/L** -- A measurement of oxygen solubility in mg/L.
- **Recall** -- Allows previously stored data to be displayed.
- **Erase all** -- Allows ALL previously stored data to be deleted.

Temperature is displayed in both dissolved oxygen modes.

NOTE: When you turn the YSI 95 off, it will “remember” which DO mode you used last and will return to that mode the next time the instrument is turned on.

To change between the YSI 95 modes, simply press and release the **MODE** button. The YSI 95 will cycle through the modes as follows:



4.4 STIRRING

It is important to realize that even a small amount of stirring will improve the DO and temperature response times in stagnant water, because the transfer process of heat and oxygen will be facilitated by convection. Also, the MEA dissolved oxygen probe is not totally stirring independent due to the consumption of oxygen at the sensor tip during measurement. When taking dissolved oxygen measurements in totally stagnant samples, the probe must be moved through the sample at a rate of 2 inches per second to provide adequate stirring.

4.5 SAVING DATA

The YSI 95 is equipped with a non-volatile memory that is capable of storing up to 50 different sets of readings. Non-volatile means that you do not need to worry that your data will be lost due to a power failure or interruption, such as when the batteries are removed. Each set consists of dissolved oxygen in percent, dissolved oxygen in mg/L and temperature. The YSI 95 will also assign a site identity number to each set of readings to allow easy review of the data. This feature is useful in situations where transcribing data is difficult or not available.

While dissolved oxygen is displayed on the screen (in % or mg/L), depress the **ENTER** button and hold it for approximately 2 seconds. The meter will flash **SAVE** on the display along with the current site identity (1 through 50) being used.

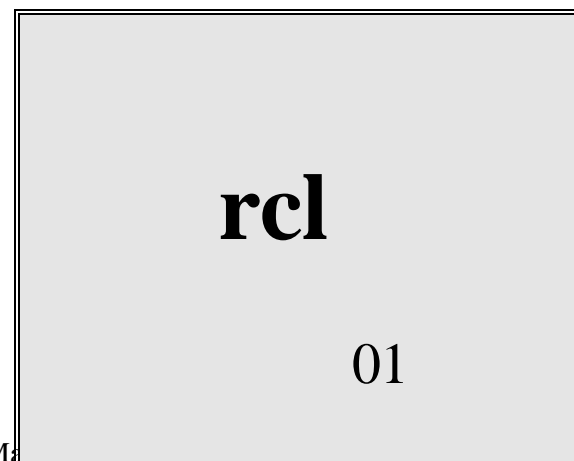
When all 50 sites are full, the display will flash **FULL** on the screen. This message will remain on the screen (even after power down) until a button is pushed.

Once you have acknowledged the memory is full, any subsequent saved data will begin overwriting existing data starting with site #1. No additional warning will be displayed.



4.6 RECALLING STORED DATA

1. To put the YSI 95 into the **RECALL** mode, depress the **MODE** button repeatedly until "**rcl**" is displayed on the screen along with the site ID number in the lower right corner.
2. Depress the **ENTER** button to review the last set of data that was saved. The YSI 95 will display the dissolved oxygen in % air saturation and temperature. Another press of the **ENTER** button



will display the dissolved oxygen in mg/L and the temperature.

3. Depress the **UP ARROW** button to move up through the saved sets of data.
4. Depress the **DOWN ARROW** button to move down through the saved sets of data.
5. When you have finished recalling data, press **MODE** two times to return to normal operation.

NOTE: The YSI 95 will recall data as a list. When the **UP ARROW** is depressed the YSI 95 will display the Site ID# for the previously recorded date. For example: If you are reviewing Site ID# 5 and the **UP ARROW** is depressed the YSI 95 will display Site ID#4. If you are reviewing Site ID# 5 and Site ID# 5 was the last set of data stored the **DOWN ARROW** button will display Site ID# 1.

Here is an example of the YSI 95 memory.

Site ID #1

Site ID #2

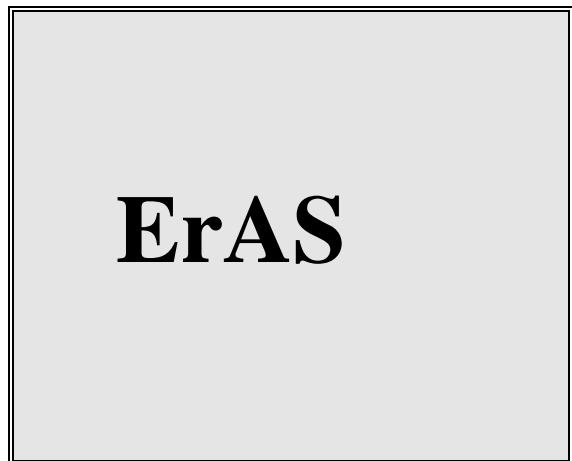
Site ID #3 ←If the **UP ARROW** button was pressed the YSI 95 would display Site ID #2

Site ID #4

Site ID #5

4.7 ERASING STORED DATA

1. To erase the data that is stored in the YSI 95's memory, depress the **MODE** button until the YSI 95 displays **ErAS** on the screen.
2. Depress and hold the **DOWN ARROW** and **ENTER** buttons simultaneously for approximately 5 seconds.
3. When the YSI 95 has successfully erased data, the display reads **DONE** for 1 to 2 seconds. The instrument will automatically change to normal operation after completion and the next saved data will be stored in site ID# 1.



IMPORTANT: Using the erase function forever and completely erases data in all 50 site ID's. Do not use the erase function until all recorded data has been transcribed to an archive outside the YSI 95.

4.8 TOGGLING BETWEEN %-AIR SATURATION AND MG/L

The **UP ARROW** key allows quick and convenient switching between the two DO parameters without going through the instrument's four modes (using the MODE key). Press the **UP ARROW** key to toggle the DO reading between %-air saturation and mg/L.

4.9 DISSOLVED OXYGEN FILTER

The YSI 95 is equipped with a DO filter to help filter out instability and high frequency noise. This feature is useful when measuring dissolved oxygen in an unstable environment such as a fast moving stream or an aeration tank. The default option for the filter is off. To activate the filter, enter the filter option menu by pressing both the **DOWN ARROW** and **MODE** keys together (▼ key slightly ahead). Operation procedures:

- Press both the **DOWN ARROW** and **MODE** keys together (▼ key slightly ahead). The current status of the filter is displayed, *On* or *OFF*, with a smaller "*FIL*" displayed in the bottom right corner of the screen.
- Press the **UP ARROW** or **DOWN ARROW** key to change the current status of the filter option.
- Press **ENTER** to confirm the change.
- To abort any changes and exit the filter menu, press the **MODE** key (instead of **ENTER**).



4.10 DISPLAY BACKLIGHT

At times it may be necessary to take measurements with the YSI 95 in dark or poorly lit areas. To help in this situation, the YSI 95 comes equipped with a backlight that will illuminate the display so that it can be easily read. To activate the backlight, press and hold the **LIGHT** button. The display will remain lit as long as the button is depressed. When you let it up, the light goes out to preserve battery life.

SECTION 5 PRINCIPLES OF OPERATION

5.1 MEA CLARK OXYGEN SENSOR

The MEA (microelectrode array) is a steady-state Clark type polarographic (voltammetric) dissolved oxygen sensor. The sensor is made of a silver anode and a gold cathode (consisting of 100 very small electrodes, each measuring approximately 8 micrometers in diameter) and is separated from the measured medium by a semi-permeable Teflon membrane. The small dimensions of each individual micro surface consume a very small amount of oxygen. Large spacing between adjacent microspheres allows for minimal overlap of diffusion layers from

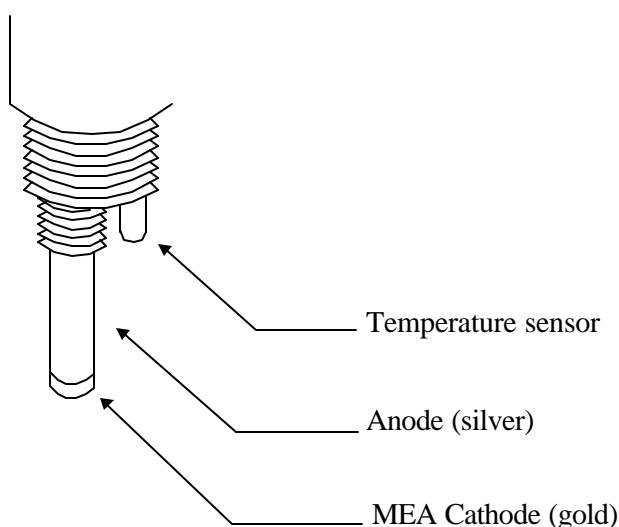
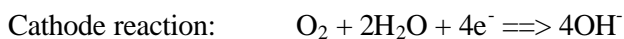


Figure 5

adjacent cathode surfaces. This design produces the minimal stirring dependence of the MEA probe. The temperature sensing element (thermistor assembly) is mounted next to the oxygen sensor vertically (see Figure 1), providing temperature readings for the DO system.

The membrane selectively allows oxygen to permeate into the sensor, but prevents most interfering molecules and fouling materials from entering. Upon permeating through the membrane, oxygen is reduced at the gold cathode. The current resulting from this reduction is diffusion-limited and is proportional to the partial pressure of oxygen in the sample. The counter reaction is the oxidation of silver at the anode/reference electrode that completes the overall electrolytic reaction in the chloride medium (KCl electrolyte) behind the membrane. These reactions, at the cathode and the anode, are as follows:



5.2 DO READINGS FROM THE CATHODE REDUCTION

The oxygen reduction current is sampled and processed, by the meter, and displayed as either %-air saturation or mg/L. While the parameter of %-air (partial pressure) is independent of temperature and salinity, mg/L (solubility of oxygen) is a function of temperature and salinity. The same %-air reading (same partial pressure) would give a higher mg/L reading at a lower temperature than at a higher temperature. The higher the salinity, the lower the solubility (mg/L) is for the same %-air reading at the same temperature.

5.3 FORMATION OF AGCL AT THE ANODE

While the oxygen reduction current passes through the internal circuit to be reported as the DO reading, it also passes through the anode oxidizing the silver and forming a thin layer of silver chloride. Furthermore, the oxidation of silver at the chloride medium provides a stable potential that the cathode potential is referenced to (for instance, the polarization potential of the cathode is -1.0 V versus the potential of the Ag/AgCl redox couple at the silver anode). Since the current of the MEA sensor is so small, there should not be any significant accumulation of AgCl at the anode for 3 to 4 years.

5.4 FUNCTION OF THE ELECTROLYTE

There are two main functions for the electrolyte:

1. Supply the chloride (Cl) to the anode/reference electrode for the counter reaction of the oxygen reduction at the cathode.
2. Provide the ionic conduction of electricity inside the cell, especially in the thin layer between the gold cathode and the membrane.

Under normal operating conditions, such as measuring oxygen around 100%-air saturation (8.27 mg/L) at 25°C, the electrolyte should last more than 500 hours. This translates into about 62.5 working days at 8 hours per day operation.

SECTION 6 MAINTENANCE OF THE MEA SENSOR

6.1 ANODE SERVICE

Warning: Under no circumstances should ammonium hydroxide be used to clean the silver anode. Ammonium hydroxide will permanently damage the condition of the MEA surface.

The MEA oxygen sensor is, in principle, the same as the conventional Clark oxygen sensor in that the sensor is made of a silver anode and a gold cathode, but the cathode is a microelectrode array. Since the current of the MEA oxygen sensor is so much smaller (on average 100 times smaller) than the current of YSI conventional oxygen sensors, consumption of the silver anode, due to the formation of AgCl, is minimal during the lifetime of the probe. There should not be any significant build-up of silver chloride at the surface of the anode for 3 to 4 years, therefore, the anode should not require chemical cleaning. However, if the surface of the silver anode has become fouled, gently wet sand it using 400 grit wet/dry sandpaper, rinse thoroughly with deionized or distilled water and wipe with a wet paper towel until the dark layer is removed. The directions are as follows:

Anode Cleaning Procedures (See figure 6)

- ✓ Rinse the sensor thoroughly after removing the membrane cap.
- ✓ Use wet 400 grit sandpaper to sand away the top layer of the anode by wrapping the sandpaper around the anode and gently rotating it until the dark layer is removed.
- ✓ Rinse the anode thoroughly with deionized or distilled water and wipe with a wet paper towel.
- ✓ Rinse the anode again with deionized or distilled water.

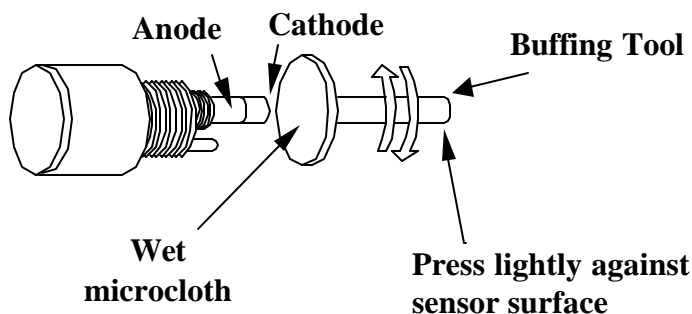


Figure 6

6.2 CATHODE SERVICE

Warning: Under no circumstances should the gold cathode surface (the MEA surface) be sanded. Sanding will permanently damage the condition of the MEA surface.

If the MEA oxygen sensor exhibits erratic behavior, such as a current rise at a rate of 1%/hour or very jumpy readings, it can be serviced by buffing. You can use a few light twists against the

surface with the wet microcloth mounted on the buffing tool provided in the 9503 reconditioning kit.

Note: The MEA sensor does not require buffing (cleaning) every time the membrane cap is changed. Under normal operating conditions, the MEA sensor should be buffed no more than two times per year.

Cathode Cleaning Procedures

- ✓ Remove the membrane cap and rinse the sensor thoroughly with deionized or distilled water.
- ✓ Place the microcloth on the buffing tool (self-adhesive). Wet the microcloth thoroughly with deionized or distilled water.
- ✓ Twist the buffing tool back and forth three times in opposite directions while lightly pressing the buffing tool against the sensor surface (see figure 6).
- ✓ Rinse the sensor surface well with deionized or distilled water after buffing.

6.3 DISSOLVED OXYGEN PROBE PRECAUTIONS

Membrane life depends on usage. If the probe is properly maintained, one membrane cap should last two to four weeks depending on how often the probe is used and the type of samples measured. It is recommended that membrane caps not be re-used.

1. To keep the electrolyte from drying out, store the probe in a moist environment, such as the calibration chamber with the wet sponge inside.
2. Erratic readings are a result of loose, wrinkled, damaged, or fouled membranes, or from large (more than 1/4 of the circumference of the probe) bubbles in the electrolyte reservoir. If erratic readings or evidence of membrane damage occurs, you should replace the membrane cap and the KCl solution. The average replacement interval is two to four weeks.
3. If the membrane is coated with oxygen consuming (e.g. bacteria) or oxygen evolving organisms (e.g. algae), erroneous readings may occur.
4. Chlorine, sulfur dioxide, nitric oxide, and nitrous oxide can affect readings by behaving like oxygen at the probe. If you suspect erroneous readings, it may be necessary to determine if these gases are the cause.
5. Avoid any environment that contains substances that may attack the probe materials. Some of these substances are concentrated acids, caustics, and strong solvents. The probe materials that come in contact with the sample include FEP Teflon, stainless steel, epoxy, polyetherimide and the polyurethane cable covering.
6. Do not allow the probe to strike hard objects. The membrane or sensor inside may be damaged.

6.4 PROBE STORAGE

For long term storage (4 weeks), remove the membrane cap, thoroughly rinse the MEA sensor with deionized or distilled water and install a new membrane cap filled with MEA probe solution.

Store the sensor in a humid environment such as the calibration chamber with the wet sponge inside. Do NOT store the probe dry.

SECTION 7 DISCUSSION OF MEASUREMENT ERRORS

There are three basic types of dissolved oxygen errors. Type 1 errors are related to limitations of instrument design and tolerances of instrument components. These are primarily the meter linearity and the resistor tolerances. Type 2 errors are due to basic probe accuracy tolerances, mainly background signal, probe linearity, and variations in membrane temperature coefficient. Type 3 errors are related to the operator's ability to determine the conditions at the time of calibration. If calibration is performed against more accurately known conditions, type 3 errors are appropriately reduced.

Type 1 Errors

- A. Meter linearity error: $\pm 0.5\%$ of full scale reading, or ± 0.04 mg/l at 25°C whichever is greater.
- B. Component and circuitry error: ± 0.04 mg/l

Type 2 Errors

- A. DO errors caused by temperature compensation for measurements at $\pm 10^{\circ}\text{C}$ from calibration temperature: $\pm 1\%$ of 25°C (± 0.08 mg/l)
- B. DO errors caused by temperature measurement errors: A maximum $\pm 0.2^{\circ}\text{C}$ temperature error is equal to $\pm 0.5\%$ (0.04 mg/L at 25°C).

Type 3 Errors

- A. Altitude: The maximum DO error caused by calibrating to altitude in increments of 100 feet: $\pm 0.18\%$ (< 0.015 mg/l at 25°C)
- B. Humidity: Errors occur if calibration is performed at less than 100% humidity. The worst possible case would be calibration at 0% humidity. The error varies with the calibration temperature as follows:

Temperature	Calibration Error at 0% humidity
0°C	0.09 mg/l
10°C	0.14 mg/l
20°C	0.21 mg/l
30°C	0.33 mg/l
40°C	0.50 mg/l

Approximating The Error

It is unlikely that the actual error in any measurement will be the maximum possible error. A better error approximation is obtained using a root mean squared (r.m.s.) calculation:

$$\text{r.m.s. error} = \pm [1a^2 + 1b^2 + 2a^2 + 2b^2 + 3a^2 + 3b^2]^{1/2} \text{ mg/l}$$

NOTE: This calculation is for a near extreme set of conditions.

If the probe is calibrated in water-saturated air, then type 3B errors (humidity), the largest error of all types, is virtually eliminated and the maximum possible error is in the order of 0.1 mg/L for the case of calibrating around 25°C.

SECTION 8 TROUBLESHOOTING

Symptom	Possible Cause	Action
1. Instrument will not turn on	A. Low battery voltage B. Batteries installed wrong C. Meter requires service	A. Replace batteries (Section 2) B. Check battery polarity. (Section 2) C. Return system for service (Section 9)
2. Instrument will not calibrate	A. Membrane is fouled or damaged B. Probe anode is fouled or dark C. Probe cathode is fouled D. System requires service	A. Replace membrane cap (Section 3) B. Clean anode (Section 6) C. Buff cathode (Section 6) D. Return system for service (Section 9)
3. Instrument "locks up"	A. Instrument has rec'd a shock B. Batteries are low or damaged C. System requires service	A & B. Remove battery lid, wait 15 seconds for reset, replace lid. (Section 2) C. Return system for service (Section 9)
4. Dissolved Oxygen readings are inaccurate	A. Cal altitude is incorrect B. Probe not in 100% water saturated air during Cal procedure C. Membrane fouled or damaged D. Probe anode is fouled or dark E. Probe cathode is fouled F. System requires service	A. Recalibrate w/correct value (Section 4) B. Moisten sponge & place in Cal chamber w/ probe & Recal (Section 4) C. Replace membrane cap (Section 3) D. Clean anode (Section 6) E. Buff cathode (Section 6) F. Return system for service (Section 9)
5. LCD displays "LO BAT"	A. Batteries are low or damaged	A. Replace batteries (Section 2)
6. Main Display reads "OVER" (Secondary display reads "ovr") (Secondary display reads "udr")	A. Temperature reading is >45°C B. Temperature reading is <-5°C C. DO temperature is >45°C D. DO % saturation is >500% E. DO concentration is >50 mg/L F. Probe current too high to calibrate	In all cases, check calibration values and procedures. (Section 4) If each of these were done correctly, return instrument for service. (Section 9)
7. Main display reads "PErr"	A. Incorrect sequence of keystrokes.	A. Refer to manual section for step by step instruction for the function you are attempting.
8. Main display reads "Err" (Secondary display reads "ra")	A. System has failed its RAM test check procedure.	A. Turn instrument OFF and back ON again. B. Return the system for service (Section 9)

Symptom	Possible Cause	Action
9. Main display reads "Err" (Secondary display reads "ro")	A. System has failed its ROM test check procedure.	A. Turn instrument OFF and back ON again. B. Return the system for service (Section 9)

10. Main reads “Undr”	Probe current too low to calibrate	
11. Main display reads “FAIL” (Secondary display reads “eep”)	A. EEPROM has failed to respond in time.	A. Return the system for service (Section 9)
12. Readings on main display don’t change	A. Meter is in recall mode.	A. Press MODE button to return to Normal Operation (Section 4)

SECTION 9 WARRANTY AND REPAIR

YSI 95 Dissolved Oxygen Meters are warranted for two years from date of purchase by the end user against defects in materials and workmanship. YSI 95 probes and cables are warranted for one year from date of purchase by the end user against defects in material and workmanship. Within the warranty period, YSI will repair or replace, at its sole discretion, free of charge, any product that YSI determines to be covered by this warranty.

To exercise this warranty, write or call your local YSI representative, or contact YSI Customer Service in Yellow Springs, Ohio. Send the product and proof of purchase, transportation prepaid, to the Authorized Service Center selected by YSI. Repair or replacement will be made and the product returned, transportation prepaid. Repaired or replaced products are warranted for the balance of the original warranty period, or at least 90 days from date of repair or replacement.

Limitation of Warranty

This Warranty does not apply to any YSI product damage or failure caused by (i) failure to install, operate or use the product in accordance with YSI's written instructions, (ii) abuse or misuse of the product, (iii) failure to maintain the product in accordance with YSI's written instructions or standard industry procedure, (iv) any improper repairs to the product, (v) use by you of defective or improper components or parts in servicing or repairing the product, or (vi) modification of the product in any way not expressly authorized by YSI.

THIS WARRANTY IS IN LIEU OF ALL OTHER WARRANTIES, EXPRESSED OR IMPLIED, INCLUDING ANY WARRANTY OF MERCHANTABILITY OR FITNESS FOR A PARTICULAR PURPOSE. YSI's LIABILITY UNDER THIS WARRANTY IS LIMITED TO REPAIR OR REPLACEMENT OF THE PRODUCT, AND THIS SHALL BE YOUR SOLE AND EXCLUSIVE REMEDY FOR ANY DEFECTIVE PRODUCT COVERED BY THIS WARRANTY. IN NO EVENT SHALL YSI BE LIABLE FOR ANY SPECIAL, INDIRECT, INCIDENTAL OR CONSEQUENTIAL DAMAGES RESULTING FROM ANY DEFECTIVE PRODUCT COVERED BY THIS WARRANTY.

AUTHORIZED U.S. SERVICE CENTERS

NORTH AND EAST REGION

YSI Incorporated • Repair Center • 1725 Brannum Lane • Yellow Springs, Ohio • 45387 •
Phone: (800) 765-4974 • (937) 767-7241 • E-Mail: info@ysi.com

SOUTH REGION

C.C. Lynch & Associates • 212 E. 2nd Street • Suite 203 • Pass Christian, Mississippi • 39571 •
Phone: (800) 333-2252 • (228) 452-4612 • Fax: (228) 452-2563

WEST REGION

EQUIPCO Sales and Service • 1110 Burnett Avenue, Suite D • Concord, CA • 94520 • Phone:
(800)550-5875 • Fax: (510)674-8655



INTERNATIONAL SERVICE CENTERS

YSI Incorporated • Repair Center • 1725 Brannum Lane • Yellow Springs, Ohio • 45387 •
Phone: (937) 767-7241 • E-Mail: info@ysi.com

Lynchford House • Lynchford Lane • Farnborough • Hampshire • GU146LT • Phone: (44-1252)
514711 • Fax: (44-1252) 511855 • Tlx: 858210

Sakura – Building 6-5-6-13 • Shinjuku, Shinjuku-ku, Tokyo • 160 • Phone: (81-3) 5360-3561 • Fax:
(81-3) 5360-3565

SPECIALTY SERVICE CENTERS

Aquaculture

Aquatic Eco Systems, Inc. • 1767 Benbow Court • Apopka, Florida • Phone: (407) 886-3939 •
Fax: (407) 886-6787

Aquacenter • 166 Seven Oaks Road • Leland, Mississippi • 38756 • Phone: (601) 378-2861 • Fax:
(601) 378-2862

Wastewater

Q.C. Services • P.O. Box 68 • Harrison, Maine • 04040 • Phone: (207) 583-2980

Q.C. Services • P.O. Box 14831 • Portland, Oregon • 97293 • Phone: (503) 236-2712

North Central Labs • 400 Lyons Road • Birnamwood, Wisconsin • Phone: (800) 648-7836 • Fax:
(715) 449-2454

CLEANING INSTRUCTIONS

NOTE: Before they can be serviced, equipment exposed to biological, radioactive, or toxic materials must be cleaned and disinfected. Biological contamination is presumed for any instrument, probe, or other device that has been used with body fluids or tissues, or with waste water. Radioactive contamination is presumed for any instrument, probe or other device that has been used near any radioactive source.

If an instrument, probe, or other part is returned or presented for service without a Cleaning Certificate, and if in our opinion it represents a potential biological or radioactive hazard, our service personnel reserve the right to withhold service until appropriate cleaning, decontamination, and certification has been completed. We will contact the sender for instructions as to the disposition of the equipment. Disposition costs will be the responsibility of the sender.

When service is required, either at the user's facility or at YSI, the following steps must be taken to insure the safety of our service personnel.

1. In a manner appropriate to each device, decontaminate all exposed surfaces, including any containers. 70% isopropyl alcohol or a solution of 1/4 cup bleach to 1 gallon tap water are suitable for most disinfecting. Instruments used with wastewater may be disinfected with .5% Lysol if this is more convenient to the user.
2. The user shall take normal precautions to prevent radioactive contamination and must use appropriate decontamination procedures should exposure occur.
3. If exposure has occurred, the customer must certify that decontamination has been accomplished and that no radioactivity is detectable by survey equipment.
4. Any product being returned to the YSI Repair Center, should be packed securely to prevent damage.
5. Cleaning must be completed and certified on any product before returning it to YSI.

PACKING INSTRUCTIONS

1. Clean and decontaminate items to insure the safety of the handler.
2. Complete and include the Cleaning Certificate.
3. Place the product in a plastic bag to keep out dirt and packing material.
4. Use a large carton, preferably the original, and surround the product completely with packing material.
5. Insure for the replacement value of the product.

Cleaning Certificate

Organization _____

Department _____

Address _____

City _____ State _____ Zip _____

Country _____

Model No. of Device _____ Lot Number _____

Contaminant (if known) _____

Cleaning Agent(s) used _____

Radioactive Decontamination Certified?

(Answer only if there has been radioactive exposure)

___ Yes ___ No

Cleaning Certified By _____

Name

Date

SECTION 10 SERVICE

10.1 SYSTEM FUNCTIONALITY TEST

OXYGEN

Functionality of the YSI 95's oxygen system can easily be tested using the following procedure.

1. If necessary, service the probe's electrodes. Follow the instructions in the *Maintenance Section*.
2. Install a fresh membrane and MEA solution.
3. Place the probe in its calibration chamber.
4. Turn the system on and allow it to stabilize.
5. Calibrate the system as described in the *Calibration Section* of this manual.
6. With the probe in the calibration chamber, check the displayed reading for stability. Erratic or drifting readings indicate a possible problem. See the *Troubleshooting Section* for help.
7. Place the probe in a zero oxygen environment. The display should decrease rapidly and reach 0.0% ± 2.0 in 5 minutes or less.

Note: A zero oxygen environment can be obtained by placing the probe in pure nitrogen gas, in a sodium sulfite solution, or in a BOD bottle filled with 350 mL of distilled water in which 3 to 7 grams of active dry yeast has been dissolved and allowed to consume the oxygen (about 5 minutes).

TEMPERATURE

Compare the 95's measured temperature value to that of a known traceable temperature standard.

10.2 TEST PROCEDURES

As stated in the *Service Philosophy* section of this manual, the best way to troubleshoot the YSI 95 is by process of elimination. Use the procedures below to test the accuracy and function of the instrument's circuits and probe. If any section of the tests fail, the board assembly or probe will have to be repaired or replaced.

When disassembled, the instrument's keypad functions can be simulated by connecting a jumper wire to the DGNG pin of JP3 and momentarily touching the desired pin or pins.

INSTRUMENT PRE-TEST SETUP

1. Disassemble the instrument case by following the *Disassembly Procedures* section of this manual.
2. Unplug the YSI 95's probe from PCB connector JP1 and JP6. Connect decade resistance boxes as shown in Figure 1. Refer to Figure 2 for connector pinouts.

3. In place of a second decade resistance box (Rt), a $10K\Omega \pm 1\%$ resistor may be used while testing the oxygen circuit. This resistance must be present or an error will be displayed on the LCD.

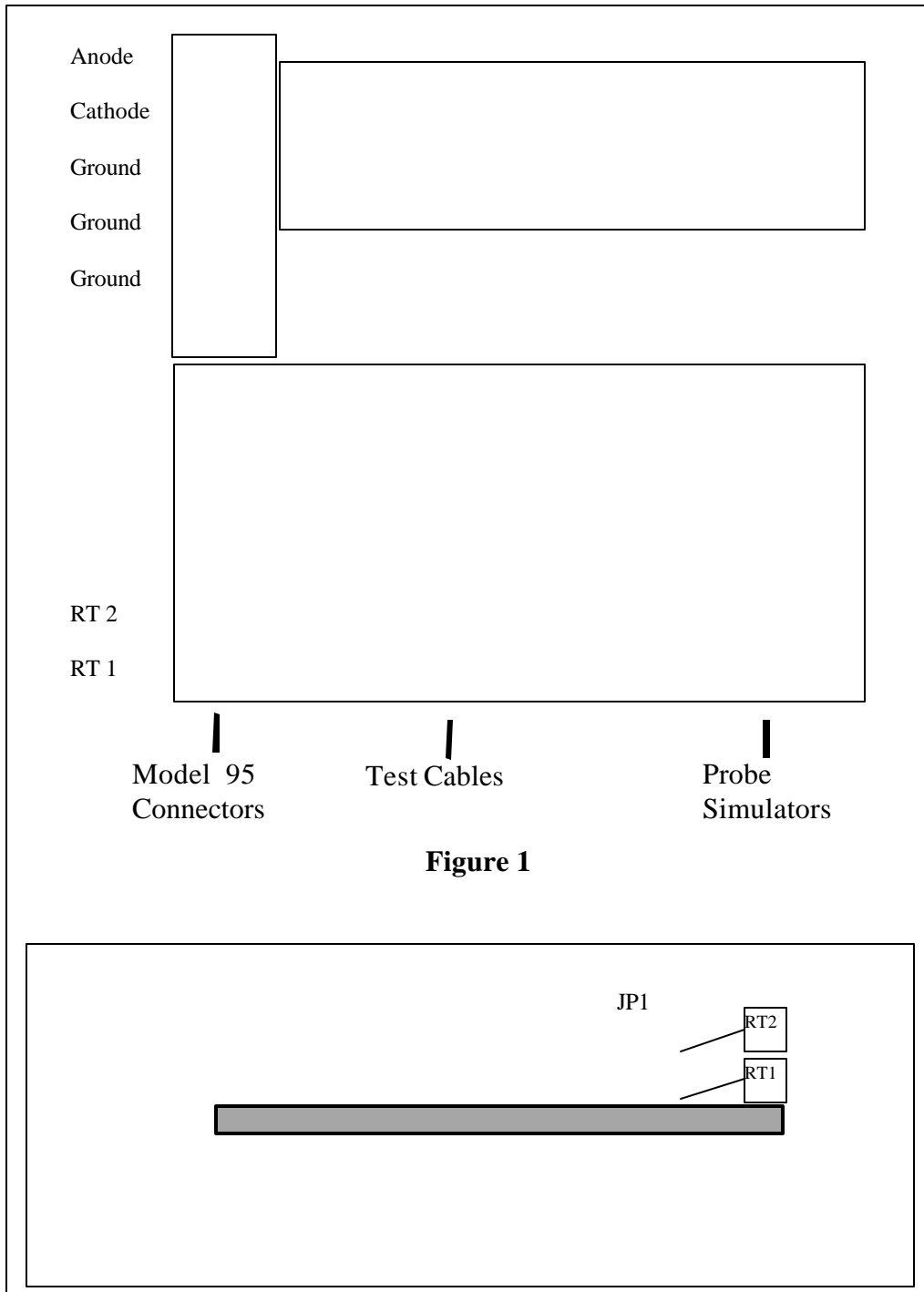


Figure 1

TEMPERATURE CIRCUIT TEST

To test the 95's temperature circuit accuracy, set decade resistance box R_t to the resistance value in the R_t column of Chart 1. Failure to meet the stated accuracy specs indicates that the PCB will need to be repaired or replaced.

Chart 1 (Temperature Test)

R_t	Nominal Reading	Acceptable Reading
$32.66\text{ K}\Omega \pm .1\%$	$0.0\text{ }^\circ\text{C}$	$0.0 \pm .1\text{ }^\circ\text{C}$
$19.90\text{ K}\Omega \pm .1\%$	$10.0\text{ }^\circ\text{C}$	$10.0 \pm .1\text{ }^\circ\text{C}$
$10.00\text{ K}\Omega \pm .1\%$	$25.0\text{ }^\circ\text{C}$	$25.0 \pm .1\text{ }^\circ\text{C}$
$5329\text{ }\Omega \pm .1\%$	$40.0\text{ }^\circ\text{C}$	$40.0 \pm .1\text{ }^\circ\text{C}$

DISSOLVED OXYGEN CIRCUIT TEST

Calibrate the YSI 95 to 100%, see System Calibration, with a R_{DO} input of 10.0 MW and R_t input of 10.0KW. Salinity and altitude settings must be set to 0 (zero).

After calibration, test the YSI 95's oxygen circuit linearity by inputting the resistance values in columns R_{DO} and R_t of Chart 2. The R_t input of 10.00 K Ω maintains the temperature at 25.0 $^\circ\text{C}$ (from Chart 1).

Chart 2 (Dissolved Oxygen Test)

R_{DO}	R_t	Acceptable % Reading	Acceptable mg/L Reading
infinity	$10.00\text{ K}\Omega \pm .1\%$	$0\% \pm .20$	$0.00\text{ mg/L} \pm 0.04$
20.0 M Ω	$10.00\text{ K}\Omega \pm .1\%$	$50.00\% \pm .20$	$4.13\text{ mg/L} \pm 0.04$
10.0 M Ω	$10.00\text{ K}\Omega \pm .1\%$	$100.0\% \pm .4$	$8.26\text{ mg/L} \pm 0.04$
5.00 M Ω	$10.00\text{ K}\Omega \pm .1\%$	$200.0\% \pm .8$	$16.53\text{ mg/L} \pm 0.08$
2.04 M Ω	$10.00\text{ K}\Omega \pm .1\%$	$490.0\% \pm 1.6$	$40.47\text{ mg/L} \pm 0.2$

PROBE LEAKAGE TEST

Electrical leakage between the probe's electrodes can cause a system failure. Use a standard ohm meter to perform the following test.

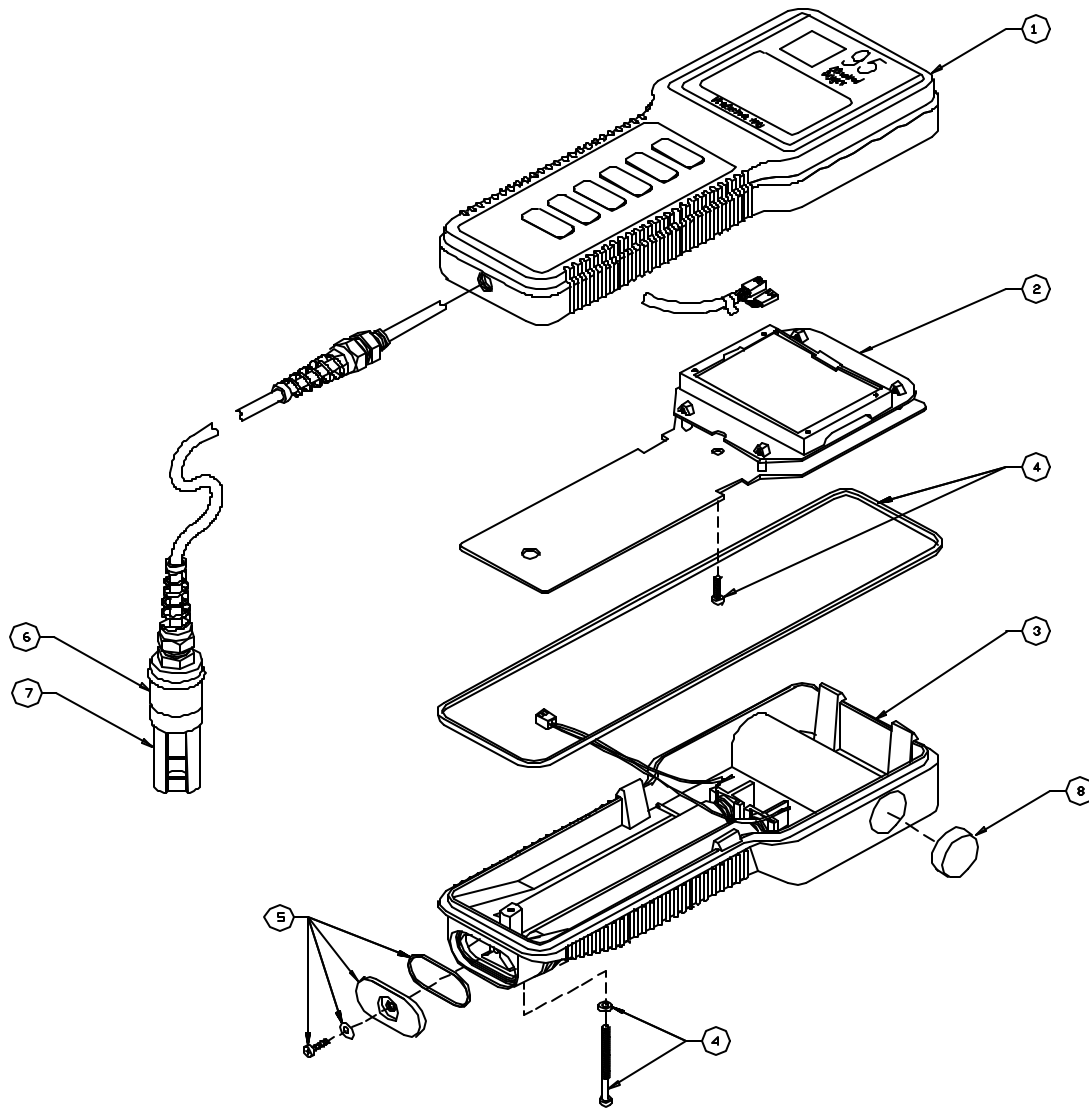
1. Remove the probe's oxygen membrane and rinse the electrodes with distilled water.
2. Thoroughly dry the sensor with compressed air or a soft towel before testing.
3. Use the probe wiring chart to confirm that the resistance between all of the electrodes (except when measuring between the two thermistor leads) is greater than infinity. Continuity of less than infinity indicates an internal electrical short which will require probe replacement.

YSI 95 Probe Wiring Chart

Cable Wire Color	Sensor or Thermistor
Green	No connection
Red	No connection
White	No connection
Black	No connection
Blue	Thermistor (JP1-RT1)
Brown	Thermistor (JP1-RT2)
Yellow	Anode (JP6-1)
Clear, Shielded	Cathode (JP6-2)
Shield, Internal	JP6-3
Shield, External	JP6-5

Important: The probe must be clean and dry to perform this test. External contamination of the probe may give a false defective indication.

10.3 ASSEMBLY DRAWING



Bubble Number	Item Number	Description
1	055194	Case Assembly, Front
2	059972	Board Assembly, Main, Non CE
2	030157	Board Assembly, Main, CE
	030898	Board Assembly, Display, CE
3	055242	Case Assembly, Rear
4	055204	Kit, Case Hardware
5	055244	Kit, Battery Hardware
6	059965	Probe Assembly, 10 Foot
6	059981	Probe Assembly, 25 Foot
6	059984	Probe Assembly, 50 Foot
6	059987	Probe Assembly, 100 Foot

7	059956	Guard, Sensor
8	055219	Sponge, Chamber

10.4 DISSASSEMBLY PROCEDURES

Refer to the *Assembly Drawing* of the YSI 95 before attempting to disassemble the meter case. Follow these steps to disassemble the meter case:

STEP 1 -- Place the instrument face down on a flat cloth-covered surface. Use a Phillips screw driver to completely remove the screw located at the bottom of the hand strap.

STEP 2 -- Using a standard screwdriver or a small coin, loosen the battery lid screw and remove the battery lid and all six AA-size batteries.

STEP 3 -- With the instrument face down on the flat, cloth-covered surface, place two fingers into the battery chamber and your other hand over the cable strain-relief. Pull straight up on the battery chamber to separate the case halves. Unplug the power connector from the PC Board.

NOTE: Because the YSI 95 is water tight, the case halves will be relatively difficult to separate.

STEP 4 -- The main PC Board is held in place by a single Phillips screw located in the center of the board. Remove the screw, and gently pull the PC Board away from the front case.

NOTE: The leads on the cable which connect to the main PC Board are quite short. Be careful not to damage the terminal connectors when you pull the PC Board away from the front case.

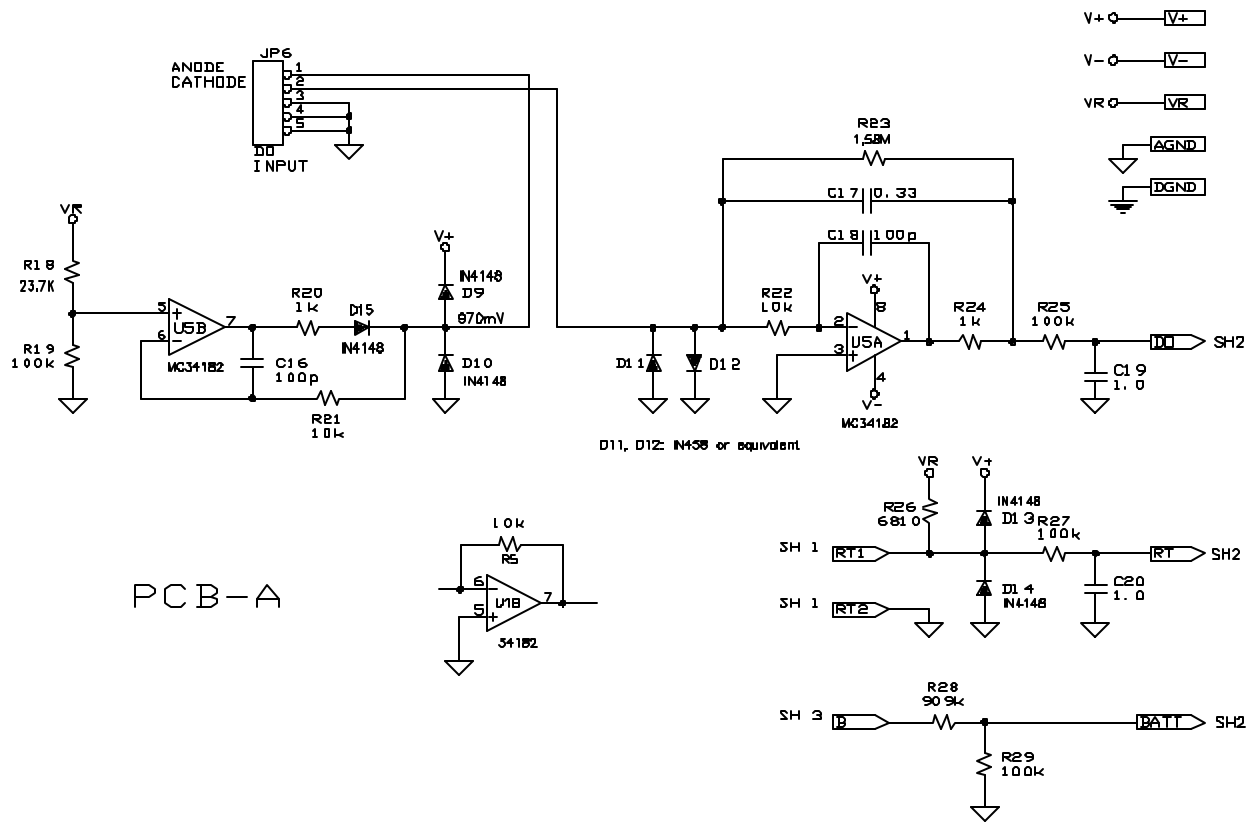
STEP 5 -- Carefully slide the probe cable terminal connector out of its mating connector. Make note of the wire color configuration so that the connectors can be correctly re-installed later.

STEP 6 -- To separate the probe cable from the front case, unscrew the outer portion of the strain relief (that portion which does not make contact with the front case). Slide the spiral portion of the strain relief down the cable toward the probe. Next, unscrew the remaining portion of the strain relief from the front case.

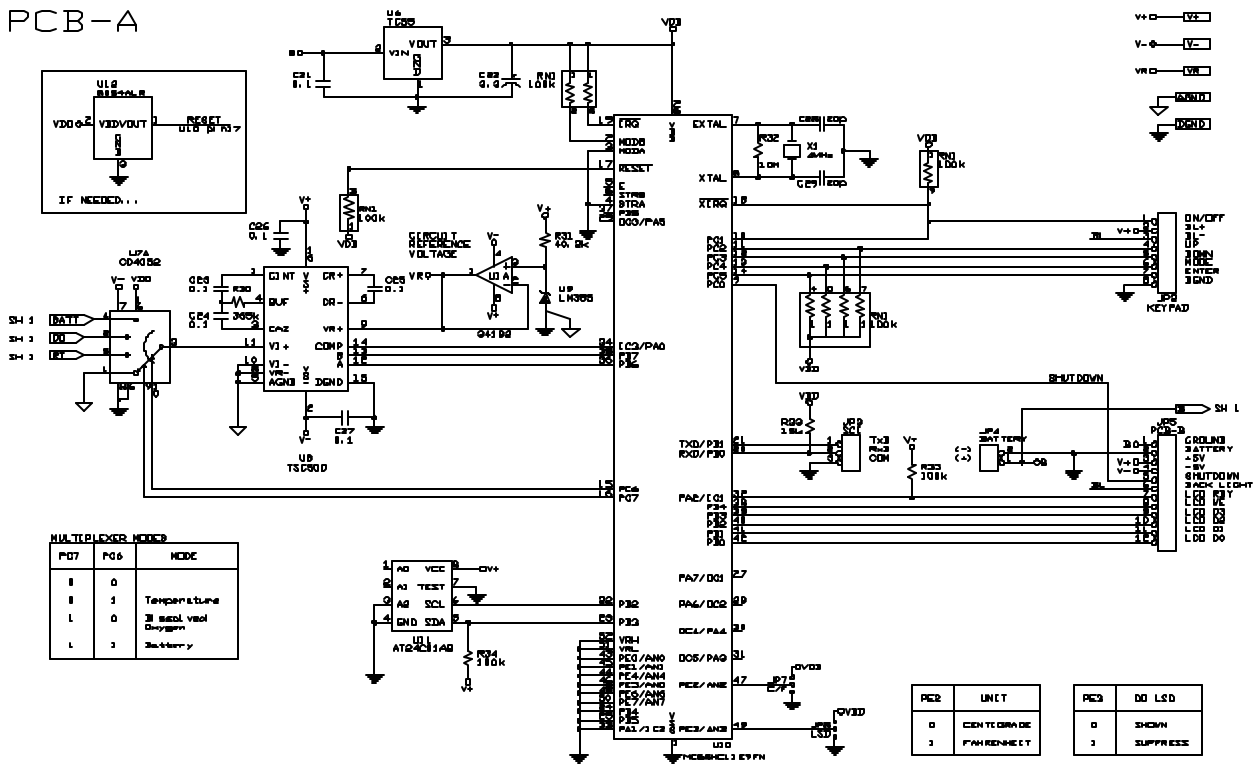
STEP 7 -- To separate the LCD from the main PC Board, squeeze the four plastic off-set spacers and slide the LCD PC board away from the main board one corner at a time. Next, remove the four small Phillips screws from the back of the LCD and remove the LCD from its clear plastic frame.

STEP 8 -- To remove the keypad from the front case, use a small Phillips screwdriver to remove the screws from the keypad's metal backplate; then lift the keypad away from the front case.

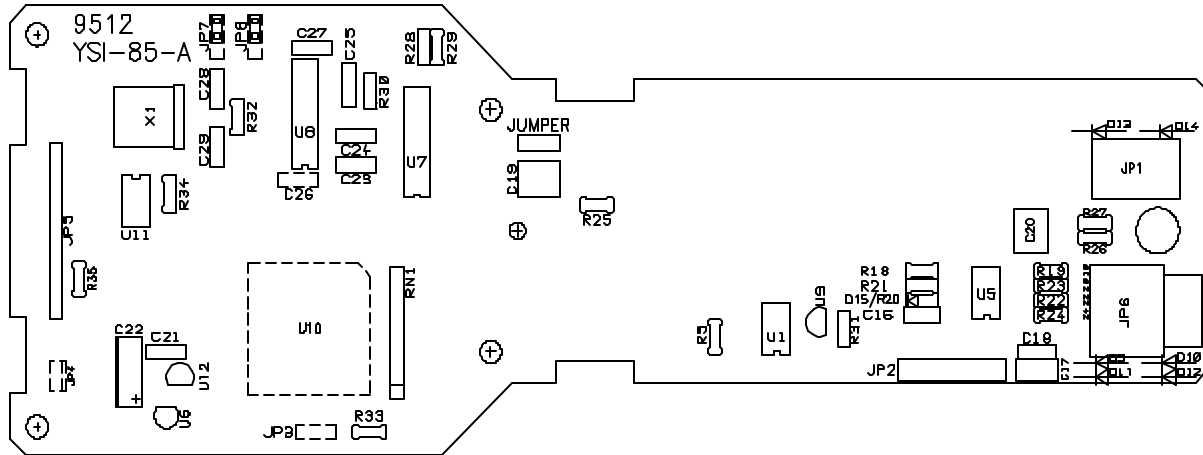
10.5 CIRCUIT DIAGRAMS



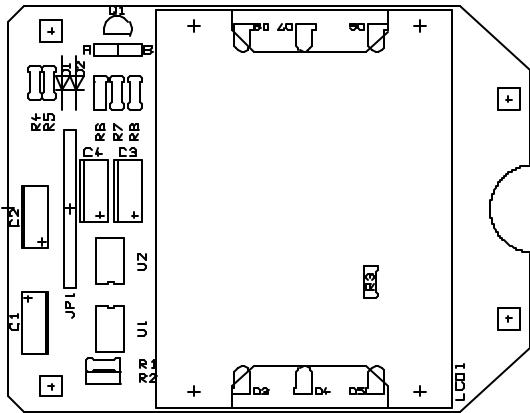
PCB-A



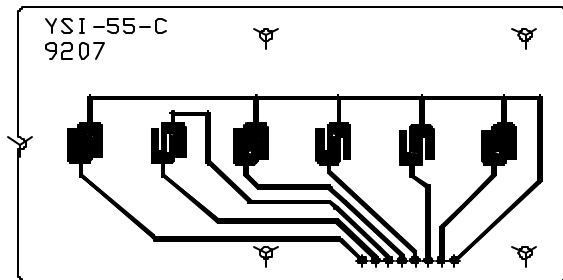
10.6 BOARD LAYOUTS



(PCB-A) Main Board



(PCB-B) Display Board



Service

U9	I.C., Harr., L8069	1
U10	I.C., MC68HC711E9CFN2	1
U11	I.C., Atmel., AT24C16PC	1
U12 (If needed)	I.C. Seiko, 8054ALR	1

Section 10

APPENDIX A GENERAL SPECIFICATIONS

Materials: ABS, Stainless Steel, and other materials

Dimensions:

Height:	9.5 inches	(24.13 cm)
Thickness:	2.2 inches	(5.6 cm)
Width:	3.5 inches max.	(8.89 cm)
Weight:	1.7 pounds (w/ 10' cable)	(.77 kg)
Display:	2.3"W x 1.5"L	(5.8 cm W x 3.8 cm L)

Power: 6 AA-size Alkaline Batteries (included)

Approximately 150 hours operation from each new set of batteries

Automatic shutoff after 4 hours without a key press

Water Tightness: Meets or exceeds IP65 standards

Operating Environment

Medium: fresh, sea, or polluted water and most other liquid solutions.

Temperature: -5 to +45 °C

Depth: 0 to 10, 0 to 25, 0 to 50, or 0 to 100 feet (depending on cable length)

Storage Temperature: -5 to +55 °C

System Performance Specifications:

Measurement	Range	Resolution	Accuracy
Temperature	-5 to +45 °C	0.1 °C	± 0.2 °C
Dissolved Oxygen	0 to 500 % Air Sat.	0.1% Air Saturation	± 2% or ± 0.2 mg/L, whichever is greater. 0 to 200% air. ± 5% for 200% to 500% air
	0 to 50 mg/L	0.01 mg/L	

DO Response Time: Application dependent. Typically 60 sec for 95% of the change at 25°C

Temperature Response Time: Typically 95% of the change

Temperature Compensation: Automatic

Salinity Compensation Range:	0 to 80 ppt (compensation between 40 and 80 is based on extrapolation)
Stirring Dependence:	0.5-mil membrane: <5% error in stagnant water or <2% at a flow rate of 2 in/sec at 120 nA nominal current 1-mil membrane: <3% error in stagnant water or <1% at a flow rate of 2 in/sec at 100 nA nominal current
Data Storage:	50 points with ID number.

APPENDIX B REQUIRED NOTICE

The Federal Communications Commission defines this product as a computing device and requires the following notice:

This equipment generates and uses radio frequency energy and if not installed and used properly, may cause interference to radio and television reception. There is no guarantee that interference will not occur in a particular installation. If this equipment does cause interference to radio or television reception, which can be determined by turning the equipment off and on, the user is encouraged to try to correct the interference by one or more of the following measures:

- re-orient the receiving antenna
- relocate the computer with respect to the receiver
- move the computer away from the receiver
- plug the computer into a different outlet so that the computer and receiver are on different branch circuits.

If necessary, the user should consult the dealer or an experienced radio/television technician for additional suggestions. The user may find the following booklet, prepared by the Federal Communications Commission, helpful: "How to Identify and Resolve Radio-TV Interference Problems." This booklet is available from the U.S. Government Printing Office, Washington, DC 20402, Stock No. 0004-000-00345-4.

APPENDIX C ACCESSORIES AND REPLACEMENT PARTS

The following parts and accessories are available from YSI or any Franchise Dealer authorized by YSI.

YSI Order Number	Description
9501	Replacement Membrane Cap Kit, 0.5 mil (6 each)
9502	Replacement Membrane Cap Kit, 1 mil (6 each)
9503	MEA Probe Reconditioning Kit
5520	Carrying Case, small (95-10 or 95-25 only)
5050	Carrying Case, medium (95-50 or 95-100)
059965	Replacement Probe & Cable Assembly (10 feet)
059981	Replacement Probe & Cable Assembly (25 feet)
059984	Replacement Probe & Cable Assembly (50 feet)
059987	Replacement Probe and Cable Assembly (100 feet)
055194	Replacement Front Case Cover
055242	Replacement Rear Case Cover
055244	Replacement Battery Cover Kit
055204	Replacement Case Gasket and Screw
055219	Calibration Chamber Sponge
030157	Main Board Assembly, CE, (Excludes Display)
030898	Display Board Assembly, CE, (Excludes Main Board)
059972	Main Board Assembly, Non CE Units, (Includes Display)

APPENDIX D UNIT CONVERSION

Conversion Chart

To Convert From	To	Equation
Feet	Meters	Multiply by 0.3048
Meters	Feet	Multiply by 3.2808399
Degrees Celsius	Degrees Fahrenheit	$(9/5 \text{ } ^\circ\text{C})+32$
Degrees Fahrenheit	Degrees Celsius	$5/9 \text{ } (^\circ\text{F}-32)$
Milligrams per liter (mg/l)	Parts per million (ppm)	Multiply by 1

APPENDIX E OXYGEN SOLUBILITY TABLE

Solubility of Oxygen in mg/l in Water Exposed to Water-Saturated Air at 760 mm Hg Pressure.

Salinity = Measure of quantity of dissolved salts in water.

Chlorinity = Measure of chloride content, by mass, of water.

$$S(^{0}/_{00}) = 1.80655 \times \text{Chlorinity } (^{0}/_{00})$$

Temp °C	Chlorinity:0 Salinity:0	5.0 ppt 9.0 ppt	10.0 ppt 18.1 ppt	15.0 ppt 27.1 ppt	20.0 ppt 36.1 ppt	25.0 ppt 45.2 ppt
0.0	14.62	13.73	12.89	12.10	11.36	10.66
1.0	14.22	13.36	12.55	11.78	11.07	10.39
2.0	13.83	13.00	12.22	11.48	10.79	10.14
3.0	13.46	12.66	11.91	11.20	10.53	9.90
4.0	13.11	12.34	11.61	10.92	10.27	9.66
5.0	12.77	12.02	11.32	10.66	10.03	9.44
6.0	12.45	11.73	11.05	10.40	9.80	9.23
7.0	12.14	11.44	10.78	10.16	9.58	9.02
8.0	11.84	11.17	10.53	9.93	9.36	8.83
9.0	11.56	10.91	10.29	9.71	9.16	8.64
10.0	11.29	10.66	10.06	9.49	8.96	8.45
11.0	11.03	10.42	9.84	9.29	8.77	8.28
12.0	10.78	10.18	9.62	9.09	8.59	8.11
13.0	10.54	9.96	9.42	8.90	8.41	7.95
14.0	10.31	9.75	9.22	8.72	8.24	7.79
15.0	10.08	9.54	9.03	8.54	8.08	7.64
16.0	9.87	9.34	8.84	8.37	7.92	7.50
17.0	9.67	9.15	8.67	8.21	7.77	7.36
18.0	9.47	8.97	8.50	8.05	7.62	7.22
19.0	9.28	8.79	8.33	7.90	7.48	7.09
20.0	9.09	8.62	8.17	7.75	7.35	6.96
21.0	8.92	8.46	8.02	7.61	7.21	6.84
22.0	8.74	8.30	7.87	7.47	7.09	6.72

Temp °C	Chlorinity:0 Salinity:0	5.0 ppt 9.0 ppt	10.0 ppt 18.1 ppt	15.0 ppt 27.1 ppt	20.0 ppt 36.1 ppt	25.0 ppt 45.2 ppt
23.0	8.58	8.14	7.73	7.34	6.96	6.61
24.0	8.42	7.99	7.59	7.21	6.84	6.50
25.0	8.26	7.85	7.46	7.08	6.72	6.39
26.0	8.11	7.71	7.33	6.96	6.62	6.28
27.0	7.97	7.58	7.20	6.85	6.51	6.18
28.0	7.83	7.44	7.08	6.73	6.40	6.09
29.0	7.69	7.32	6.96	6.62	6.30	5.99
30.0	7.56	7.19	6.85	6.51	6.20	5.90
31.0	7.43	7.07	6.73	6.41	6.10	5.81
32.0	7.31	6.96	6.62	6.31	6.01	5.72
33.0	7.18	6.84	6.52	6.21	5.91	5.63
34.0	7.07	6.73	6.42	6.11	5.82	5.55
35.0	6.95	6.62	6.31	6.02	5.73	5.46
36.0	6.84	3.52	6.22	5.93	5.65	5.38
37.0	6.73	6.42	6.12	5.84	5.56	5.31
38.0	6.62	6.32	6.03	5.75	5.48	5.23
39.0	6.52	6.22	5.98	5.66	5.40	5.15
40.0	6.41	6.12	5.84	5.58	5.32	5.08
41.0	6.31	6.03	5.75	5.49	5.24	5.01
42.0	6.21	5.93	5.67	5.41	5.17	4.93
43.0	6.12	5.84	5.58	5.33	5.09	4.86
44.0	6.02	5.75	5.50	5.25	5.02	4.79
45.0	5.93	5.67	5.41	5.17	4.94	4.72

* This table is provided for your information only. It is **NOT** required when calibrating the YSI 95 in accordance with the instructions outlined in the section entitled *Calibration*

APPENDIX F CALIBRATION VALUES TABLE

Calibration values for various atmospheric pressures and altitudes.

Note: This table is for your information only. It is not required for calibration.

Pressure Inches of Hg	Pressure mm Hg	Pressure kPA	Altitude in feet	Altitude in meters	Calibration Value in %
30.23	768	102.3	-276	-84	101
29.92	760	101.3	0	0	100
29.61	752	100.3	278	85	99
29.33	745	99.3	558	170	98
29.02	737	98.3	841	256	97
28.74	730	97.3	1126	343	96
28.43	722	96.3	1413	431	95
28.11	714	95.2	1703	519	94
27.83	707	94.2	1995	608	93
27.52	699	93.2	2290	698	92
27.24	692	92.2	2587	789	91
26.93	684	91.2	2887	880	90
26.61	676	90.2	3190	972	89
26.34	669	89.2	3496	1066	88
26.02	661	88.2	3804	1160	87
25.75	654	87.1	4115	1254	86
25.43	646	86.1	4430	1350	85
25.12	638	85.1	4747	1447	84
24.84	631	84.1	5067	1544	83
24.53	623	83.1	5391	1643	82
24.25	616	82.1	5717	1743	81
23.94	608	81.1	6047	1843	80
23.62	600	80.0	6381	1945	79
23.35	593	79.0	6717	2047	78
23.03	585	78.0	7058	2151	77
22.76	578	77.0	7401	2256	76
22.44	570	76.0	7749	2362	75
22.13	562	75.0	8100	2469	74
21.85	555	74.0	8455	2577	73
21.54	547	73.0	8815	2687	72
21.26	540	71.9	9178	2797	71
20.94	532	70.9	9545	2909	70
20.63	524	69.9	9917	3023	69
20.35	517	68.9	10293	3137	68



YSI incorporated

1700/1725 Brannum Lane
Yellow Springs, Ohio 45387 USA
(800) 765-4974 (937) 767-7241
FAX: (937) 767-9320
Website: <http://www.ysi.com>
E-MAIL: info@ysi.com

059938

A59938B

March 1999

